

FIGURE 1

(4)

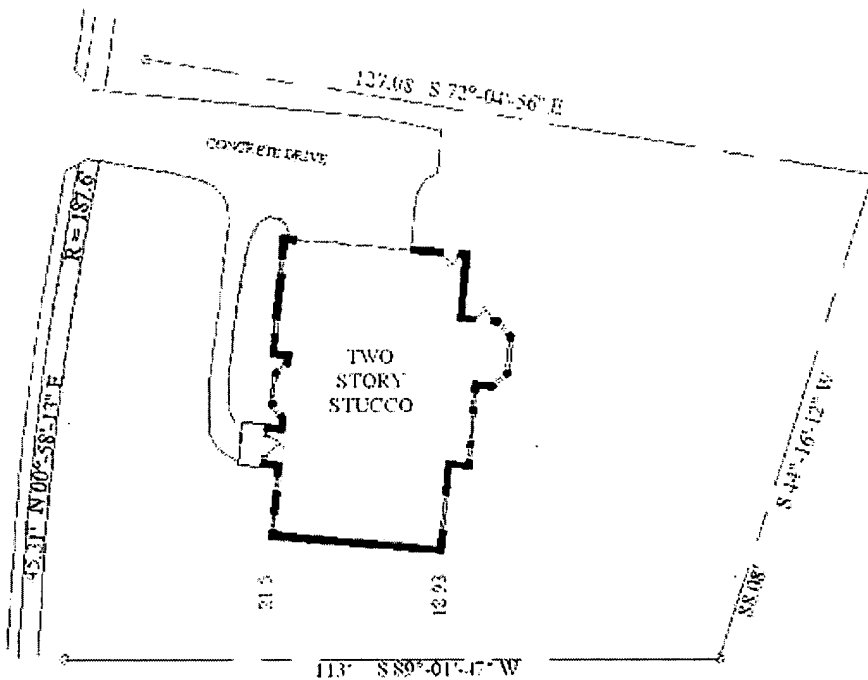
0000000000000000000000000000000000

CURVE	RADIUS	LENGTH	CHORD	CH.BEARING
A	214.50'	36.18'	36.14'	N44°39'41"W
B	462.90'	26.13'	26.13'	N47°52'35"W

AREA: 25,462 S.F.
ORIGINAL LOT ONLY
PB 205 , PGS 63 - 65

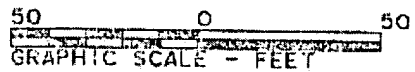
COURSE	BEARING	DISTANCE
1	N49°29'36"W	62.29'
2	S 34°15'20"E	8.91'
3	S 55°44'40"W	37.00'
4	S 85°02'03"W	34.19'
5	S 62°25'10"W	18.00'
6	N 62°25'10"E	67.27'

MAGNETIC NORTH



Legend

RES	Reber set	SSR	Sanitary sewer easmt
RBF	Reber fnd	R/W	Right-of-way
OTPF	Open top pipe fnd	PB/PB	Plat book/page
OPTS	Open top pipe set	CONC	Concrete
CTPF	Crimped top pipe fnd	DK	Dock
CTPS	Crimped top pipe set	PAT	Patie
BL	Building line	P	Porco
DE	Drainage easmt	S	Steep
UE	Utility easmt	-x-	Fence



99080229 L&S

THE CARTER GROUP

3761 Venture Drive
Suite 120
Duluth, GA 30096

SURVEY FOR: SMITH RESIDENCE

SUB SENTINEL FERRY
LOT 65
BLOCK
UNIT

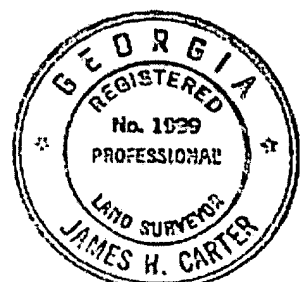
LAND LOT 344 6th DISTRICT

FULTON COUNTY, GEORGIA

SCALE 1" = 50' DATE: 08/18/99

In my opinion, this plat is a correct representation of the land plotted

Reg. Land Surveyor No. 1999



*The field data upon which this plat is based has a closure precision of one foot in 16,000 feet and an angular error of 7 seconds per angle point and was adjusted using the Compass Rule.

*This plat has been calculated for closure and is found to be accurate within one foot in 10,000 feet.

*Equipment used: Topcon GTS 303 Total Station.

This is to certify that this property IS NOT located in a Zone A Flood Hazard Area per FEMA's (FIRM) panel.

340 _____ Dated _____

FIGURE 2

0 0 1 0 5 0 " F 4 5 7 5 9 6 0

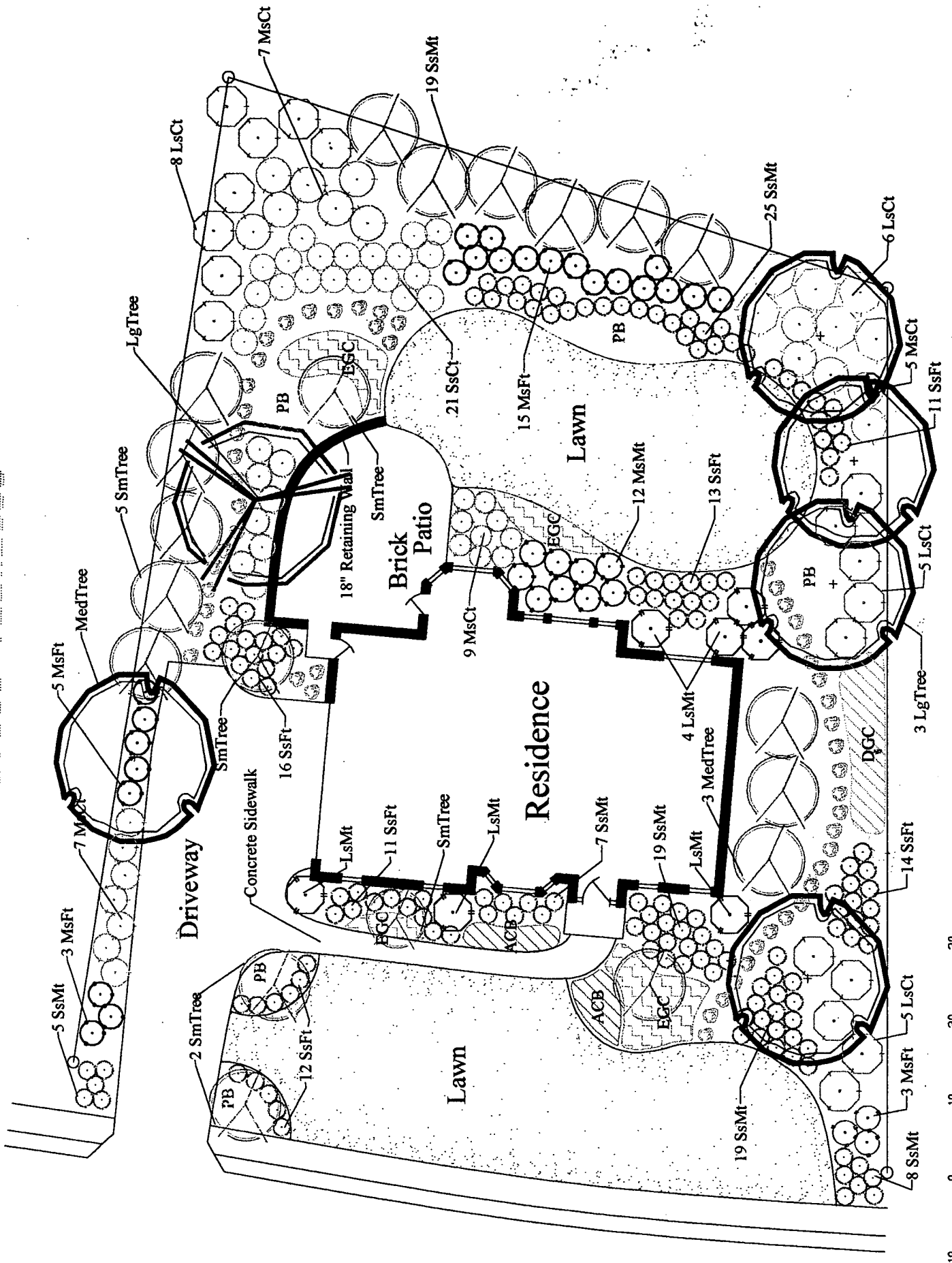


FIGURE 3

Scale 1" = 10'


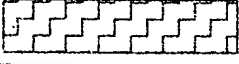
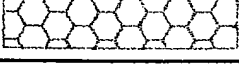










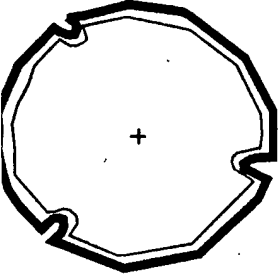
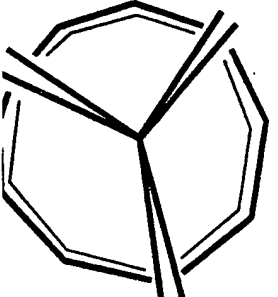
Symbol	Key	Quantity	Plant Type	Characteristics
	ACB	77	Annual Color Bed	Annual Flowers
	EGC	76	Evergreen Ground Cover	Spreading evergreen plant material up to 18" in height
	DGC	21	Deciduous Ground Cover	Spreading deciduous plant material up to 18" in height
	PB	26	Perennial Bed	Perennial flowering plants
	SsFt	77	Small Shrub Fine Texture	Shrub up to 36" in height, and 36" wide Leaf size less than 3/4"
	SsMt	76	Small Shrub Medium Texture	Shrub up to 36" in height, and 36" wide Leaf size 3/4" - 2"
	SsCt	21	Small Shrub Coarse Texture	Shrub up to 36" in height, and 36" wide Leaf size greater than 2"
	MsFt	26	Medium Shrub Fine Texture	Shrub 36" - 60" in height, 36" - 60" wide Leaf size less than 3/4"
	MsMt	12	Medium Shrub Medium Texture	Shrub 36" - 60" in height, and 36" - 60" wide Leaf size 3/4" - 2"
	MsCt	27	Medium Shrub Coarse Texture	Shrub 36" - 60" in height, and 36" - 60" wide Leaf greater than 2"
	LsFt	0	Large Shrub Fine Texture	Shrub greater than 60" in height, and 60" wide Leaf diameter less than 3/4"
	LsMt	7	Large Shrub Medium Texture	Shrub greater than 60" in height, and 60" wide Leaf size 3/4" - 2"
	LsCt	23	Large Shrub Coarse Texture	Shrub greater than 60" in height, and 60" wide Leaf size greater than 2"
	SmTree	19	Small Tree	Less than 25ft tall
	MedTree	5	Medium Tree	25 - 40ft tall
	LgTree	1	Large Tree	Greater than 40ft tall

FIGURE 4